

ESH 150-12

(AGM + Gel + FR)

Pasted High Technology

Electrolyte Suspension

For Longer Service Life

INTRODUCTION

ESH Series (Gel+FR) are designed for general-purpose high rate applications such as UPS, Telecom, and Electrical Utilities. With 10 years Design Life, the batteries comply o the most popular international standards. The series is engineered to provide performance reliability and consistency over the life of the product. The battery uses silica gel to immobilize the electrolyte inside the battery.

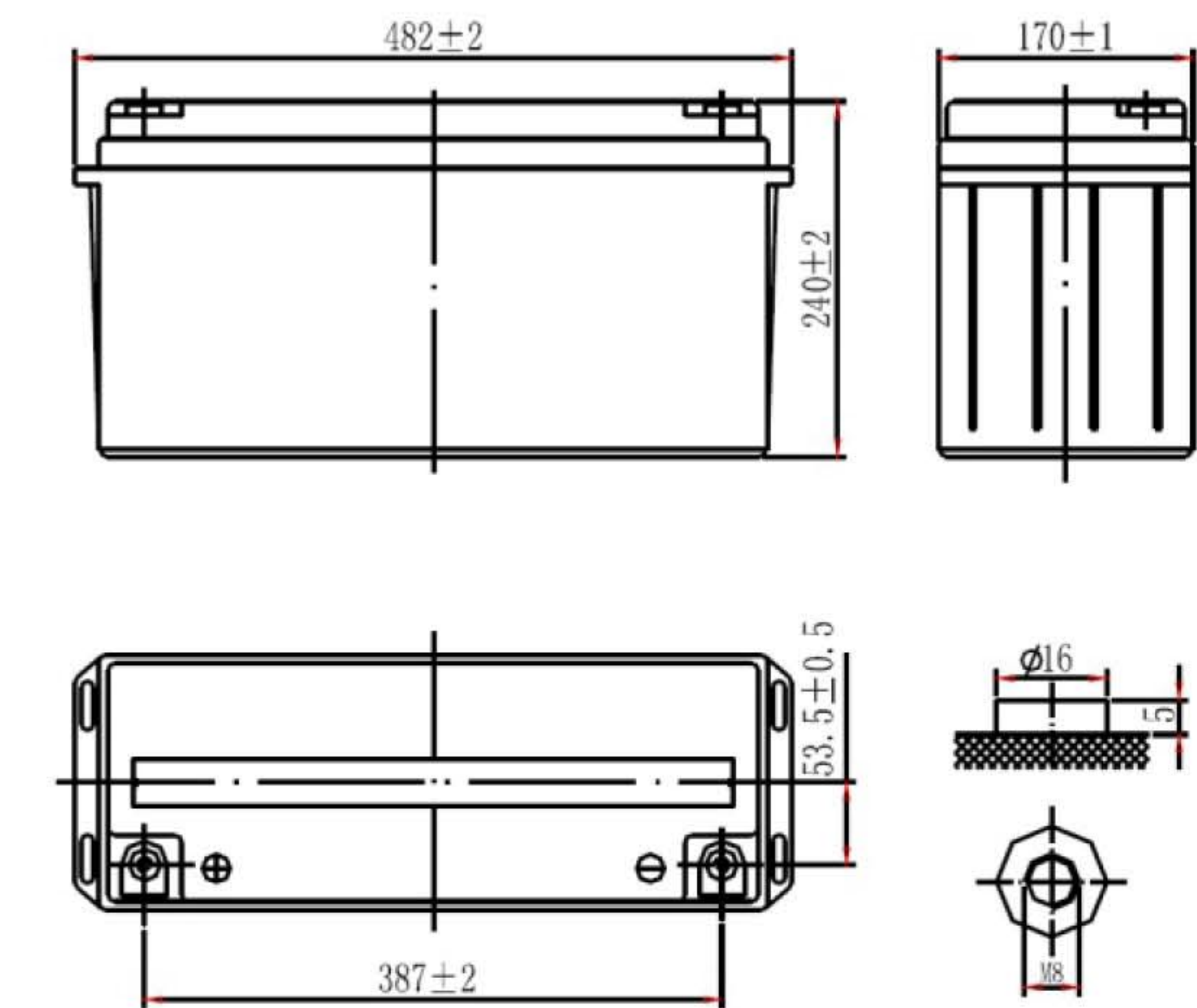
In order to stay in competition with the international battery market, Global has established capital and technical ties with the world's most renowned battery manufacturers, such as Yuasa Corporation of Japan, Hagen Batteries AG. of Germany, and SAFT of France.

TECHNICAL FEATURES

1. 10 years Design Life @ 25 C
2. V0 Class Flame Retardant ABS Container
3. Lead-tin-Calcium alloy grid for long service life, in Float and Cyclic
4. Lower Internal Resistance
5. High Power Density
6. High Realibility
7. Low Pressure Venting System
8. Heavy-Duty Grids
9. High Recovery Capacity
10. Absorptive Glass Mat System (AGM System)
11. Proven Silica Gel Technology improves Battery Cyclic Life

APPLICATIONS

1. UPS Application
2. Telecom Application
3. Medical Instruments
4. Camera & Photographic
5. Personal Computers
6. Lighting Equipment
7. Security Alarm System



SPECIFICATION

Nominal Voltage		12V
Capacity (10HR, 25°C)		150Ah
Dimension	Length	482mm (19.0inch)
	Width	170mm (6.69inch)
	Height	240mm (9.45inch)
	Total Height	240mm (9.45inch)
Approx Weight		44.8kg (98.8bs)
Design Life		10 Years

CHARACTERISTICS

Capacity 25°C(77°F)	10 Hour Rate	150 Ah
	5 Hour Rate	122.5 Ah
	1 Hour Rate	103 Ah
Internal resistance		3.1mΩ
Self-discharge (20°C)	1 month	3% of capacity declined
Self-discharge	Discharge	-20°C~60°C
	Charge	-10°C~60°C
	Storage	-20°C~60°C
Maximum discharge current		970A(5s)
Short Circuit Current		2800A
Maximum charging current		40A
Charge Methods (Constant Voltage Charge 77°F(25°C)) - Cyclic Use		Cycle Use 2.30VPC to 2.35V
		Temp. compensation - 30mV/°C
Charge Methods (Constant Voltage Charge 77°F(25°C)) - Standby Use		Standby Use 2.25VPC to 2.27VPC
		Temp. compensation - 20mV/°C

CONSTANT CURRENT DISCHARGE (Amperes) at 25°C

End Point Volts/Cell	10min	15min	30min	1h	3h	5h	10h	20h
1.60V	340.00	283.00	186.00	103.00	42.90	27.60	15.40	8.07
1.65V	322.00	268.00	177.00	98.70	41.10	26.40	15.30	8.03
1.70V	303.00	254.00	167.00	94.10	39.30	25.30	15.20	7.98
1.75V	285.00	239.00	158.00	89.20	37.40	24.50	15.10	7.93
1.80V	274.00	230.00	153.00	87.20	36.70	23.70	15.00	7.88

CONSTANT POWER DISCHARGE (Watts per cell) at 25°C

End Point Volts/Cell	10min	15min	30min	45min	1h	2h	3h	5h
1.60V	605.00	505.00	329.00	241.00	186.00	109.00	79.20	53.70
1.65V	583.00	487.00	318.00	234.00	182.00	107.00	77.20	52.40
1.70V	560.00	470.00	308.00	227.00	178.00	104.00	75.20	51.00
1.75V	537.00	452.00	297.00	220.00	174.00	101.00	73.30	50.00
1.80V	515.00	435.00	286.00	212.00	170.00	97.60	71.30	48.80

Note:

1)Continuous prolonged use at elevated temperature will reduce the battery life by approximately one half for every 8°C above 25°C.